

# Social Story

## **BETSY AND I**

This Social Story is for Undercover Artist Festival 2023.

**Content Warning:** Ableism, hot tea and dodgy ex-husbands. Discussion of suicidal thoughts, mention of mental illness.

## During the show

I'm going to see *Betsy and I*. *Betsy and I* is a play I will see in the Diane Cilento Studio at Queensland Theatre. The show will be on stage. There will be actors, colours, and sounds during the show.

The theatre lights will dim when the show starts but will not go black. I can walk around the theatre and make noise if I need to. I can leave the theatre and go to the breakout room if I get overwhelmed.

This play is 65 minutes long. There is no intermission, but a 5-minute break takes place in the middle of the show. This helps the actors and audience to have a quick rest.



## About the play

The play is about a woman named Ivy who is disabled. She has chronic illnesses and is sad about her life. Ivy gets a purple wheelie walker to help her walk easier, and she names it Betsy. Betsy comes to life; I will see her wearing purple motorbike riding gear.

The play is set in a magical world where mobility aids like wheelchairs, walking sticks, and wheelie walkers come to life. I will see a human being playing Betsy, but, in the play, only the owner of the mobility aid can see them.

Ivy is very sad about her disability and separation from her husband at the show's beginning.

Ivy and Betsy go on fun adventures to find cake and go to Kmart and the park. I will meet other people on their adventure, like Ivy's dad, Ivy's ex-husband - Greg, Greg's dad, a stranger in an elevator and a security guard at Kmart.

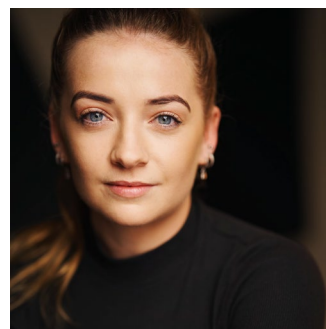
With the help of Betsy, at the end of the show, I will see her change how she feels about her life, and she is happy.



## Who I will meet

I will see four actors on stage.

This is **Sophie**, she plays the human form of **Betsy**. Betsy is fun, clever and very supportive.



This is **Alex**, she plays **Ivy**, a disabled woman who experiences pain and tiredness. The play has been written by Alex and is disabled in real life.

This is **Cameron**. Cameron plays lots of roles:

1. Ivy's dad, **John**. He loves his daughter very much and always wants to fix everything.
2. Ivy's ex-husband, **Greg**. We don't really like Greg and the way he has treated Ivy, but remember, it's just Cameron the actor and we like him.
3. Ivy's father-in-law, **Shane**. Shane is **Greg's dad**. He loves Ivy like a daughter but doesn't know Greg and Ivy have broken up.
4. A **stranger** in an elevator who speaks their mind.
5. A **security guard** at Kmart.



This is **Sarah**. She plays Ivy's best friend, **Molly**. Sarah is the **Auslan interpreter** so deaf people can understand the play too.

## What I will see

When I sit down in the theatre, I will see the set. A set is an imaginary place, built on the stage, to show where the story happens.

I will see a table and chairs on one side of the stage. I will see lots of boxes on stage because Ivy is moving back into her dad's house. I will also see teapots because Ivy has teapot collection and she loves tea.

My imagination will take me to the shopping centre, Kmart and the park.



## **What I will hear**

- In the play I will hear lots of sounds.
- I will hear the actors talking through microphones.
- I will hear four loud shouts when Ivy meets the human Betsy for the first time.
- I will also hear music and live singing.

## **At the end of the show**

At the very end of the play all the actors will bow. This is called a curtain call. I can clap. Clapping tells the actors I liked the show. If I really like the show I can stand up and clap. This is called a standing ovation. If the sound is too loud, I can cover my ears.

At the end of the show, the lights will come up and I will exit the theatre and head back into the foyer.